



Gulet Queen of Datca

Gulet QUEEN OF DATCA is an excellent 34m (118ft) Gulet launched in 2009. She is a classically modern schooner rig and beautifully presented with excellent amenities and toys including most waters toys. She has 6 Turkish crew members who speak English and are friendly and professional and are great with kids. Gulet QUEEN OF DATCA has an extremely spacious feel both indoors and out. The raised salon house offers optimum views from large surrounding windows and 3 separate entry doors provide fabulous natural ventilation. The deluxe wood floors and structure give the yacht a refined elegant vibe while traditional deck beams bring an old meets new ambiance.

PRICE LIST (2017)

Period:	01.01. -03.06. 30.09.-28.10.	03.06.-01.07. 02.09.-30.09.	01.07.-02.09.
Price (€):	27.120	31.640	41.245

INCLUDED IN THE PRICE:

- Shipboard accommodation,
- permits,
- insurance,
- all equipment on board, tender with outboard engine,
- linens and towels,
- fuel for main engine for 4 h of navigation per day,
- crew salaries,
- gasoline for tender, diesel for generator,
- VAT.

EXCLUDED:

- Transfers to or from the yacht/hotel/airport,
- shore excursions, adverse activities (scuba diving, big game fishing, rafting...),
- National park and Park of Nature entrances,
- guided tours,
- gratuities / tips for the crew.
- port and marina fees, anchorages.





OPTION 1

Charter fee + APA of 7.000€ per week for food and beverages provisioning, port and marina fees, National park and Parks of Nature entrances, extra navigation, fuel costs for dinghy when used for water sports and all other extra costs not specified as included in the Charter fee.

OPTION 2

Charter Fee + fixed costs of food and beverages, Extra costs to be paid on board:

FOOD AND BEVERAGES OPTIONS

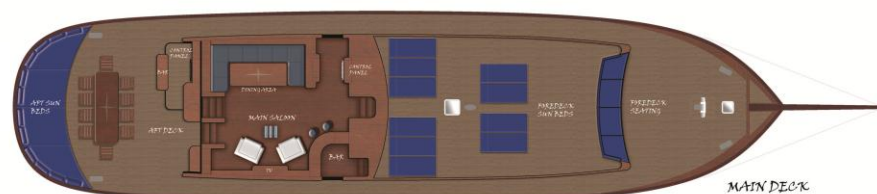
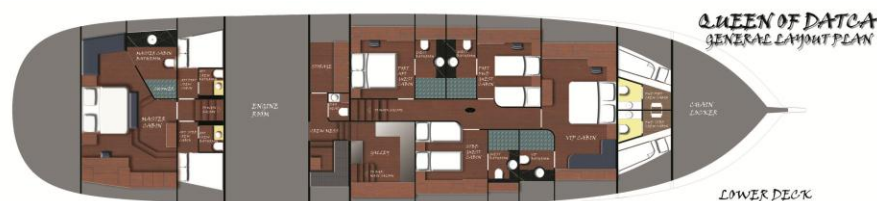
Half board: 380 € pax/week (breakfast + lunch)

Full board: 500 € pax/week (breakfast + lunch + dinner)

All inclusive drinks: 200 € pax/week

Non alcoholic drinks: 90 € pax/week

*children 0-3 free of charge, children 3-10 50% discount



ACCOMMODATION:

- 3 double bed cabins
- 2 twin bed cabins

Gulet Queen of Datca - Photos

PAYMENT CONDITIONS:

- 50% ADVANCE payment - upon reservation.
- 50% BALANCE payment - 5 weeks before charter period.

CHECK-IN: Saturday - 16:00 h

CHECK-OUT: Saturday - 09:00 h

